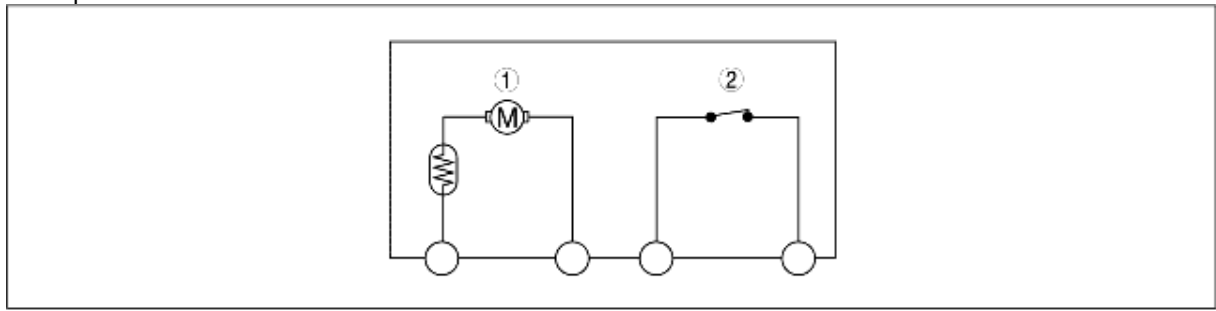


TRUNK LID LATCH AND OPENER CONSTRUCTION

B3E091467002T02

- The following parts are built into the trunk lid latch and lock actuator:
 - A latch switch that turns on/off with the opening/closing of the trunk lid.
 - When the trunk lid opens, the trunk lid latch switch is on.
 - When the trunk lid is closed, the trunk lid latch switch is off.
 - An opener that latches/unlatches the latch.



B3E0914T011

1	Opener
2	Trunk lid latch switch